



ELEMENTIVE



Telcordia® Network Engineer

Telcordia® Network Engineer gives you an open, integrated, and scalable geospatial environment in which you can visually manage and plan your network, helping you to maximize network resources, improve customer service, increase data flow, and achieve operational efficiency.

001

Advanced, geospatial network management

002

Seamless data flowthrough to downstream processes

003

Planning, design, documentation, and management of multiple network technologies

Discover Geospatial Network Management

Geospatially Manage Complex, Multitechnology Networks

As network complexity grows, competition intensifies, and operational budgets continue to feel the squeeze, the need to optimize business processes and operations through technology becomes a mission-critical priority. It's not enough to simply keep a network operating smoothly any more. You need consolidated network management and data flow in order to make the network more efficient, to deliver more services, and to increase profitability.

Network Engineer is an open, integratable, geospatial environment for the comprehensive design and management of your network and inventory. It documents and designs an end-to-end model of all network elements and facilitates seamless data integration between systems on the network — including provisioning and service assurance systems.

With Network Engineer acting as the central repository, all the components within an Operations Support System (OSS) environment can collaborate by sharing network inventory data.

Network Engineer provides a sophisticated geodatabase, which houses all network and physical inventory information. This gives you a centralized repository for seamless, real-time, flowthrough network and service provisioning, allowing you to maximize network resources, improve customer service, increase data flow, and achieve operational efficiency.

Network Engineer allows you to keep track not only of current network inventory, but also historical and planned network views, thus enabling other key functions, including procurement, planning, provisioning, engineering, operations, workforce management, and service assurance.

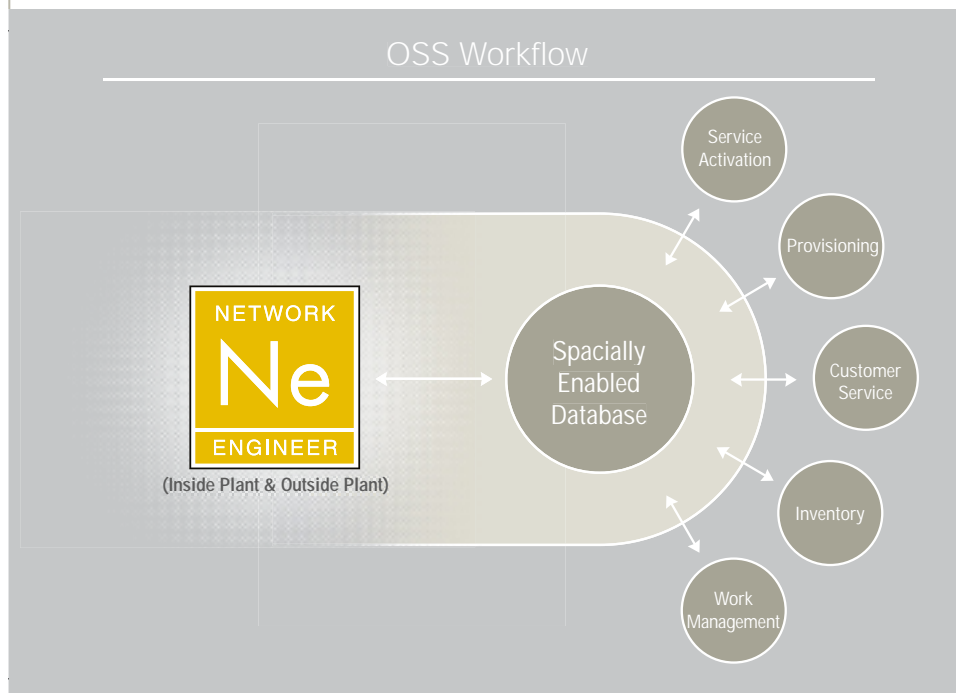
This intelligent, fully customizable system makes it easy to document both inside and outside plant equipment, creating an end-to-end model of the entire network infrastructure. Within its graphical environment, Network Engineer displays the model against detailed, land-based features and customer information. It also allows you to query the stored inventory database using the built-in work-order manager; analyze network elements; and publish detailed, customized reports.

As object-oriented, component-based technology, Network Engineer represents a powerful extension of the ESRI® ArcGIS™ platform. It applies a COM-based Application Programming Interface (API) for simplified customization and integration, which allows you to more effectively implement and manage a geospatial database comprised of network inventory, engineering models, and other disparate information.



Network Engineer supports multiple network technologies. Diagram depicts copper cable connection to fiber cable.

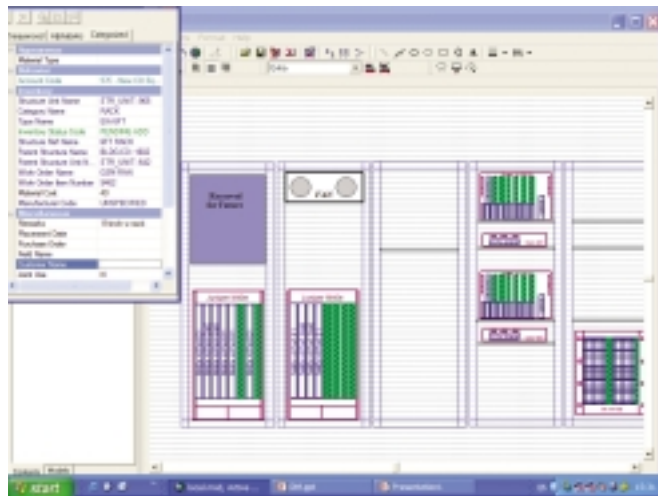
Engineer More
Effectively with
Intelligent
Geographic
Information System
(GIS) Capabilities



Get Complete ISP
and OSP
Management

The Inside Plant (ISP) management feature of Network Engineer documents and associates inventory with a network structure, allowing you to maximize all available resources. Using a graphical editor, you can manage available floor space, rack footprint, equipment-to-rack relationships, and card-to-equipment-slot relationships. You also get Model Selector, a tool for creating and maintaining saved model palettes of equipment for selection and placement of an active model. This tool increases design productivity (drag and drop designs) and helps to ensure adherence to company standard designs.

The Outside Plant (OSP) management feature enables documentation, placement, and editing of connected network inventory through the GIS, including network spans, structures, transmedia (wireline, mobility, IT environments, fiber, copper, and coaxial cable), and equipment. All network elements and related structures can be placed in connected networks of transmedia, which are recorded in a work order for utilization by construction personnel.



View your Inside Plant's existing equipment, planned equipment, and reserved space with Network Engineer.

Telcordia® Elementive™ OSS

Network Engineer is just one component of Elementive OSS, the new generation of open, configurable software from Telcordia. Individual components integrate easily within multivendor environments, giving you the flexibility to address your needs your way. And with a standards-based architecture, Elementive OSS offers lower up-front investments and reduced total cost of ownership.

Enjoy a Smooth
Implementation
and Ongoing
Support

— Telcordia provides extensive support from implementation to continued operational consulting. Through MESA Solutions, a Telcordia subsidiary, we can help you maximize your network resources as you define your overall business objectives, operational procedures, and workforce responsibilities. MESA offers a wide range of services for your geospatial investments, including GIS consulting, project management, systems implementation and integration, legacy system migration, custom application development, and expertise on ESRI's ArcGIS technology. All of which gives you the resources you need to keep your network operating at its peak.

Move to Open
Systems

— Network Engineer is built on an open information framework that incorporates standards-based integration technologies such as COM, OLE Automation, Java™ Messaging Service (JMS), and XML. Our framework is a comprehensive realization of New Generation Operations Systems and Software (NGOSS) core principles, which Telcordia Technologies has been helping to shape since the inception of the TeleManagement Forum (TMF) NGOSS initiative. Simply put, our extensible open information framework enables you to introduce other Telcordia and non-Telcordia products, network resources, and service elements without costly integration.

Do More With
Less

— Learn more about how Network Engineer can help you consolidate your network management functions, while giving you a clear, comprehensive picture of your entire network, thus helping you achieve more efficient, reliable, and cost-effective network operations.



For more information about Telcordia Technologies, contact your local account executive, or you can reach us at:
1.800.521.2673 (U.S. and Canada)
+44 (0)207 569 7702 (Europe)
+1.732.699.5800 (all other countries)
telecom-info@telcordia.com
www.telcordia.com

For more information about MESA Solutions, contact your local account executive, or you can reach us at:
+1.888.909.MESA (U.S. and Canada)
+1.256.864.0400 (all other countries)
mesa@mesahq.com
www.mesasolutions.com



ESRI is a registered trademark and ArcGIS and ArcMap are trademarks of Environmental Systems Research, Inc.
Java is a trademark of Sun Microsystems, Inc.
Copyright ©2003 Telcordia Technologies, Inc.
All rights reserved.

MC-FUL-IN-003